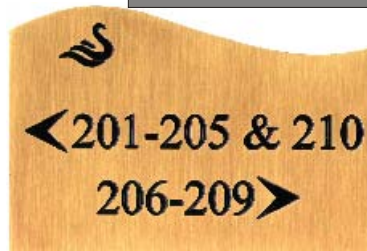


Occupancy/Service Door



Engraved laminate occupancy signs, available in a wide variety of colour combinations. These signs are quick to make and inexpensive to buy. We have the experience to get your occupancy signage right the first time.

Non-glare or clear acrylic signs sized to suit the message. Graphics are applied to the reverse to discourage vandalism. Designers and architects can choose any standard paint colour for the sign background, allowing them to match their signs to the building decor.

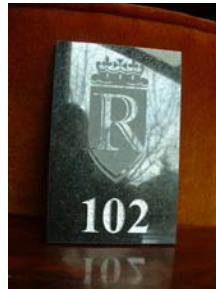


Etched brass plate with infilled text and logo. Custom shapes, and logos, as well as the use of brass, aluminum, bronze, and wood, adds a unique and elegant finishing touch.

Suite Numbers



2" opaque white, cast acrylic numbers, solvent welded to back painted 1/8" non glare acrylic, 3" x 6", radius corners



Sandblasted, polished black marble suite number. The logo has been lightly blasted to give it an etched appearance.



Engraved and chromed suite entry sign, installed over the security viewer, in-filled numbers.



1/8" x 4" x 4" routed satin brass plaque with screen printed graphics and clear coat



1/4" x 4 1/2" x 9 1/2" clear maple, screen printed border and logo, stencil painted suite number



5" x 9" x 3/4" cherry stained oak, decorative edge, individual 2" polished cast brass numbers, pin mounted